

# 3. Vibrant and Creative Cultural Ecosystems

## 3.1 Map Tourism and Cultural Assets

### Create a Tourism and Cultural Asset Map (10 POINTS)

All elements must be completed to receive credit.

1. Identify potential tourism and cultural assets, including notable people, institutions, locations, programs, and organizations, in your community. Stakeholders should broadly and inclusively represent all cultural assets within a community. You may work regionally to complete any or all of the tourism and cultural map.

See attached map of assets.

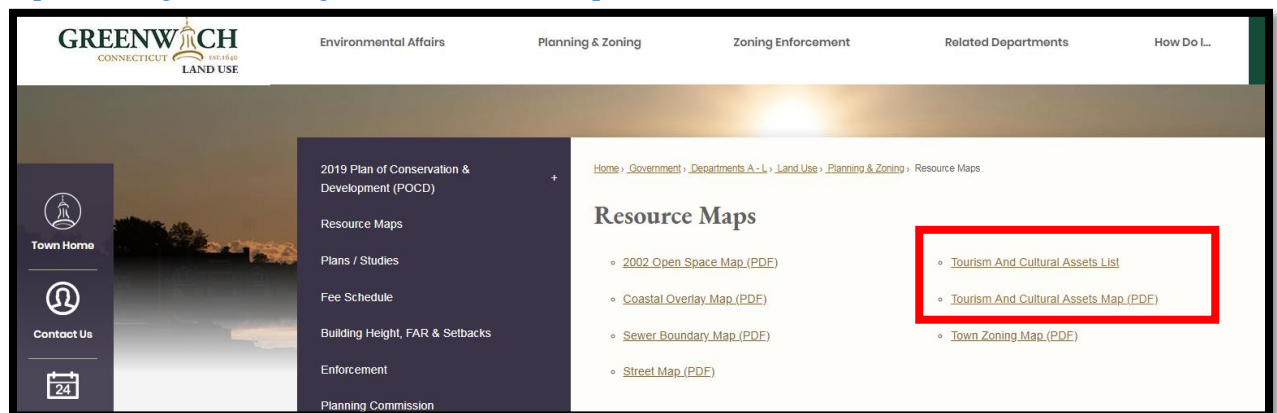
- 2) Identify the following information for each potential tourism and cultural asset:
  - a) Contact information and/or designee
  - b) A general description of the asset including hours of operation and admission fee
  - c) Location of the asset and website
  - d) For venues only- a detailed description of the venue, including square footage, seating capacity and availability
  - e) Type of asset: identity category (attraction, lodging, historic site, museum, gallery, culinary, retail, etc.)

**Submit:** A list of assets with the above-referenced information included.

See attached list of assets.

- 3) Create a useable and public online resource that enables the community to search, learn and use the information generated from the survey responses. (For example, an interactive and searchable map). You may use GIS mapping, Excel, or any other database to compile tourism and cultural assets. You may conduct the research of assets through surveys or interviews. We recommend that you sort the assets by category (tourism attraction, lodging, historic sites, museums, galleries, restaurants, shopping, and events).

<https://www.greenwichct.gov/440/Resource-Maps>



**Submit:** Hyperlink to the finished web-based resource.

- 4) Create a maintenance plan for updating the dynamic tourism and cultural asset web resource defining how often the map will be updated (for instance, seasonally). The map of tourism and cultural assets was not made interactive due to the severe limitation of the website options. The viewer will be able to locate the places on the map and sound more information a list associated

with the map. The map will be maintained by Planning and Zoning staff and updated every quarter or as needed. Since the map was created (July 20, 2018) it has been already updated once.

**Submit:** A copy of the plan for maintaining and updating the tourism and cultural asset map.

### **Update Your Profile on CTVisit (5 POINTS)**

*All elements must be completed to receive credit.*

1. Update and maintain your municipal profile on the CTVisit website. On the CTVisit website upload seasonal images to reflect the current season and social media platforms for your community (Instagram, Facebook, Twitter, Pinterest, YouTube).

The *CTVisit* was updated las month. Jean Hebert [Jean.Hebert@ct.gov](mailto:Jean.Hebert@ct.gov) or 860-500-2375 was contacted and request was made to eliminate one restaurant and one hotel which were no longer operating. See email correspondence below:

Hello Aleksandra:

I have forwarded your email to Jean Hebert, our site administrator and listings editor for future action. If you need to contact Jean, she can be reached at [Jean.Hebert@ct.gov](mailto:Jean.Hebert@ct.gov) or 860-500-2375.

Sincerely,

Connecticut Office of Tourism

Dept. of Economic & Community Development

450 Columbus Blvd., Suite 5

Hartford, CT 06103

---

**From:** Moch, Aleksandra <[Aleksandra.Moch@greenwichct.org](mailto:Aleksandra.Moch@greenwichct.org)>

**Sent:** Tuesday, May 29, 2018 3:34 PM

**To:** CT.TravellInfo

**Subject:** CTVisit- website update

I am working on a report for Sustainable Connecticut program. One of the action items requests that the profile of Greenwich be updated and current on the CTVisit website. I was pleased that you have posted so many events and activities. I have reviewed them all and found two items which need an update or removal. The National restaurant at 376 Greenwich Avenue and Stanton House Inn at 76 Maple Avenue are not in business anymore; therefore, they need to be removed/replaced.

Please confirm receiving my email and updating the profile.

Regards,

Aleksandra Moch

Conservation Commission

2. Maintain the content, images, and functioning links periodically.

**Submit:** Hyperlink to your municipal profile.

Hyperlink to the municipal profile on *CTVisit*: <http://www.ctvisit.com/search/site/Greenwich>



# Tourism and Cultural Asset Map of Greenwich

**Legend**

Town boundary

PROPERTY LINES

ScenicRoads

Neighborhoods(Census-Designated Place)

Community Centers

Community Clubs

Libraries

Museums/Galleries

Yacht Clubs

Marinas

Private Clubs

Private Community

Golf

Polo

Swim-Tennis

Historic

National Register Historic Districts

Local Historic Properties

Local Historic Districts

State Register of Historic Places

National Register of Historic Places

Greenwich Historic Society Plaqued Homes

Parks & Recreation

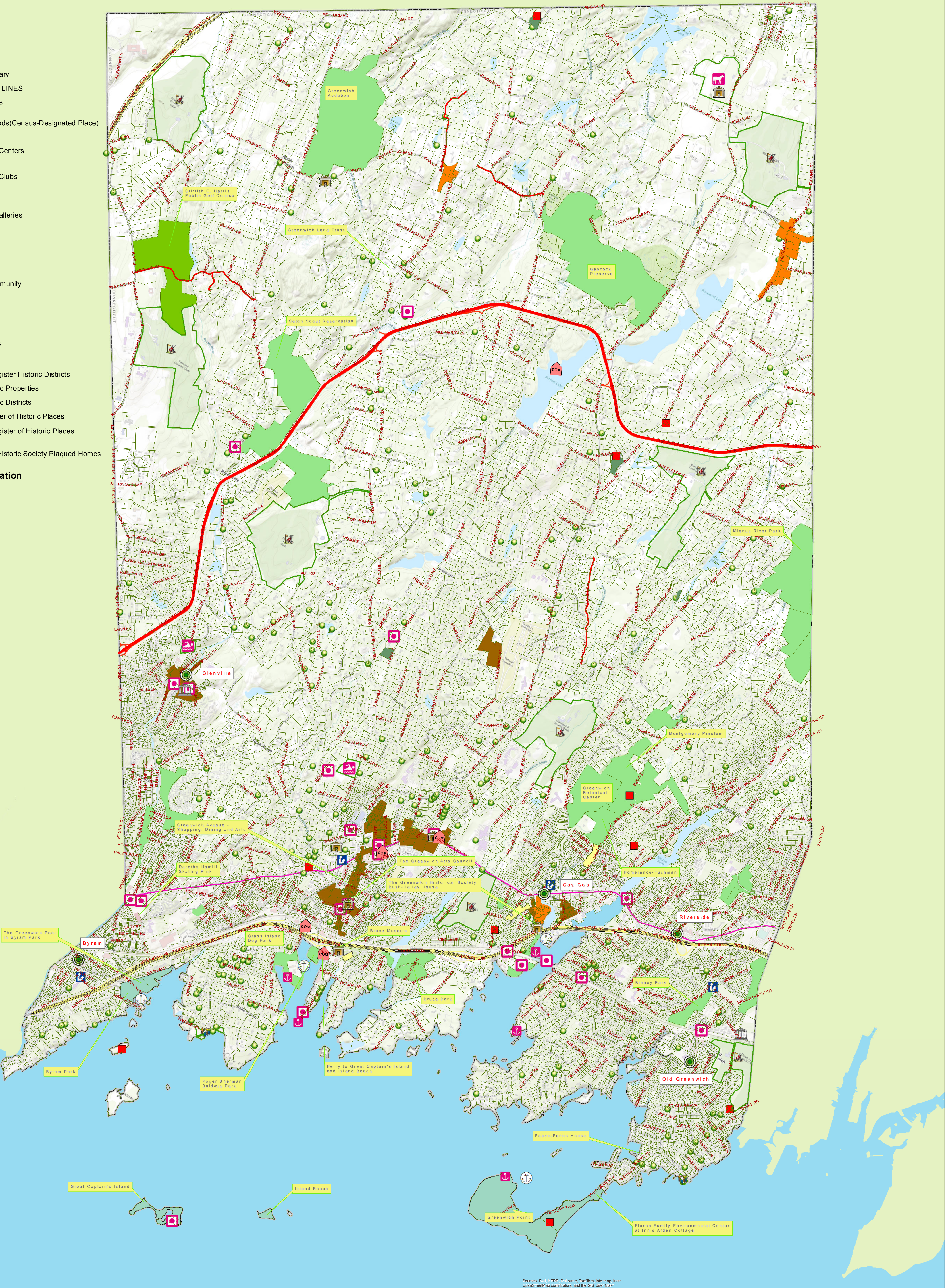
Beach

Golf

Ice Skating

Park

Playground



Sources: Esri, HERE, DeLorme, TomTom, Intermap, Inc.,  
OpenStreetMap contributors, and the GIS User Community

This map was produced from the Town of Greenwich Geographic Information System. The Town expressly disclaims any liability that may result from the use of this map. Aerial: 2013, Date: 4/22/13, Map: 05/19/16, Copyright © 2005 by the Town of Greenwich.



1 inch = 1,500 feet



# **SURVEY OF TOURISM AND HISTORIC ASSETS IN GREENWICH, CT**

## **TOURISM ATTRACTIONS**

### **1. Scenic Roads**

Cliffdale Road, Burying Hill Road, Buckfield Lane, Merritt Parkway, Sawmill Lane, Selden Lane

### **2. Greenwich Botanical Center**

**Phone:** (203) 869-9242

**Open:** Mon-Fri: 9:00am-4pm

**Admission:** FREE

**Location:** 130 Bible St., Cos Cob, CT 06807

<https://www.gecgreenwich.org/>  
attraction

### **3. Greenwich Audubon**

**Phone:** (203) 869-5272

**Open** daily: 10am-5pm

**Admission:** Center & Main Sanctuary Trails Admission: \$6 adults, \$3 youth/seniors, FREE for National Audubon Society members

**Location:** 613 Riversville Rd, Greenwich, CT 06831

<http://greenwich.audubon.org/>  
attraction (nature center)

### **4. Greenwich Point and Byram Park**

**Phone:** (203) 531-8938

**Open:** 6am-sunset (Greenwich Point) 8am-sunset (Byram Park)

**Location:** Greenwich Point: 6 Tods Driftway, Greenwich, CT 06870, Byram Park: 4 Ritch Ave W, Greenwich, CT 06830

**Admission:** Single Entry Park Pass 5-64 yrs \$7.00

No Pass 0-4 yrs FREE (No Pass)

Single Entry Senior Pass\* 65+ yrs FREE

\*(Proof of age required at entrance to Park)

A maximum of ONE Single Entry Parking Pass per transaction

Single Entry Parking Pass \$35.00

Only valid at Greenwich Point and Byram Parks

Single Entry Park Passes may be purchased at either:

EGCC 9:00 a.m.-6:00 p.m. Monday-Friday May 1 - Oct. 31

WGCC 9:00 a.m.-6:00 p.m. Monday-Friday May 1 - Sept. 14

Park Pass Information Tel.: (203) 622-7817 (Feb. - Sept.)

Before 7:00 a.m. and after 5:00 p.m. only Single Entry Parking Passes

are required, no per person Pass

Payments accepted: Cash or All Major Credit Cards

[http://www.greenwichct.org/government/departments/parks\\_and\\_recreation/beaches/recreational\\_attractions](http://www.greenwichct.org/government/departments/parks_and_recreation/beaches/recreational_attractions)

## **5. Great Captain Island ferry and cruise to nowhere**

**Phone:** (203) 622-7814

**Open:** everyday

**Location:** 1.5 miles from mainland. Accessible by ferry from Arch St. dock (ferry varies according to tides) and by private boat.

**Admission:**

Resident Pass holder 16-64 yrs \$6.00

Resident Pass holder 5-15 yrs \$5.00

Resident Pass holder 65+ yrs FREE

Single Entry Pass holder 5-64 yrs \$13.00

Single Entry Pass holder 65+ yrs \$7.00

Children under 0-4 yrs FREE (No Pass)

Ferry tickets are sold at the Arch St. Ferry Dock.

Ferry Hotline: (203) 618-7672

In addition to the ferry fee, a Resident Park Pass or a Single Entry Park Pass is required to board the ferry. (fees noted below)

Single Entry Park Passes must be purchased at one of the civic centers

### **SINGLE ENTRY PARK PASS FEES**

Single Entry Park Pass 5-64 yrs \$7.00

No Pass 0-4 yrs FREE (No Pass)

Single Entry Senior Pass\* 65+ yrs FREE

\*(Proof of age required at entrance to Park)

A maximum of FIVE of each ticket type per transaction

Single Entry Park Passes may be purchased at either:

EGCC 9:00 a.m.-6:00 p.m. Monday-Friday May 1 - Oct. 31

WGCC 9:00 a.m.-6:00 p.m. Monday-Friday May 1 - Sept. 15

Park Pass Information Tel.: (203) 622-7817 (Feb. - Sept.)

Payments accepted: Cash or All Major Credit Cards

### **CRUISE TO NOWHERE**

Open to the public All ages \$20.00

A maximum of five tickets per transaction.

Cruise to Nowhere tickets are sold at the Arch Street Dock from 10 am on the day of the cruise. Limited availability. A relaxing 2 hour tour of local waters

**Schedule:**[http://www.greenwichct.org/government/departments/parks\\_and\\_recreation/Directions\\_to\\_Fields\\_Schools\\_Rental\\_Facilities/2018\\_GCI\\_Ferry\\_Schedule.pdf](http://www.greenwichct.org/government/departments/parks_and_recreation/Directions_to_Fields_Schools_Rental_Facilities/2018_GCI_Ferry_Schedule.pdf)

**Information about the island:**

[http://www.greenwichct.org/upload/medialibrary/d32/prFA\\_GreatCaptainsIsland.pdf](http://www.greenwichct.org/upload/medialibrary/d32/prFA_GreatCaptainsIsland.pdf)

### **6. Bruce Park**

**Phone:** (203) 531-8938

**Open:** everyday

**Location:** Davis Avenue in Greenwich

**Admission:** free

### **7. Binney Park**

**Phone:** (203) 531-8938

**Open:** everyday

**Location:** between Sound Beach Avenue and Arch Street in Old Greenwich

**Admission:** free

### **8. Roger Sherman Baldwin Park**

**Phone:** (203) 531-8938

**Open:** everyday

**Location:** Arch Street in Greenwich

**Admission:** free

## **PARKS and BEACHES**

### **Parks**

#### **1. Babcock Preserve**

**Features:** Horseback riding, Natural wildlife, Restrooms, Stream, Trails (Seven miles), Cross Country Skiing

**Open:** Sunrise-Sunset

**Admission:** FREE

**Location:** North Street – North of Parkway

<https://www.greenwichct.gov/>

#### **2. Bible Street**

**Features:** Baseball/Softball Diamond, Basketball Court, Bocce Courts, Playground (ages 2-12), Walking track

**Open:** Sunrise-Sunset

**Admission:** FREE

**Location:** 130 Bible Street

<https://www.greenwichct.gov/>

#### **3. Binney Park**

**Features:** Benches, Gazebo, Hardball fields, Playground(ages2-12), Ponds, Softball diamond, Stream, Tennis court, Walking track, War memorial

**Open:** Sunrise-Sunset

**Admission:** FREE

**Location:** 101 Sound Beach Avenue

<https://www.greenwichct.gov/>

#### **4. Bruce Park**

**Features:** Baseball/Softball diamond, Croquet court, Hiking, Open areas (suitable to frisbee and soccer), Paths, Picnic areas, Playground(ages2-12), Ponds, Rental facilities, Restrooms, Scenic view of Long Island Sound, Tennis court

**Open:** Sunrise-Sunset

**Admission:** FREE

**Location:** Bruce Park Drive

<https://www.greenwichct.gov/>

#### **5. Christiano Park**

**Features:** Baseball/Softball diamond, Cricket court, Playground (ages 2-12), Restrooms, Tennis court

**Open:** Sunrise-Sunset

**Admission:** FREE

**Location:** 25 Lyon Avenue

<https://www.greenwichct.gov/>

#### **6. Cos Cob Mill Pond Park**

**Features:** Benches and Tables, Chess tables, Historical cemetery, Ponds

**Open:** Sunrise-Sunset

**Admission:** FREE

**Location:** Strickland Road

<https://www.greenwichct.gov/>

#### **7. Cos Cob Park**

**Features:** Gazebo, Picnic tables, Playground, Restrooms, Soccer field, walking track, 9/11 memorial, Theater overlooking Long Island Sound

**Open:** Sunrise-Sunset

**Admission:** FREE

**Location:** 22 Sound Shore Drive

<https://www.greenwichct.gov/>

#### **8. Grass Island**

**Features:** Dog park, Parking, Benches, Picnic tables, Water fountain, Public marina, Restrooms, Walking track, Historic nature trail, Managed conservation area, Boat storage

**Open:** Sunrise-Sunset

**Admission:** FREE

**Location:** 250 Shore Road

<https://www.greenwichct.gov/>

#### **9. Havemeyer Field and Greenwich Common**



**Features:** Ballfield, Playground (ages 2-12), Running/Walking track, Soccer field, Benches, picnic tables, Chess tables

**Open:** Sunrise-Sunset

**Admission:** FREE

**Location:** 290 Greenwich Avenue

<https://www.greenwichct.gov/>

## **10.Laddins Rock Sanctuary**

**Features:** 18 acres, 2 small water courses and foot bridge, Natural woodland, Scenic vistas

**Open:** Sunrise-Sunset

**Admission:** FREE

**Location:** Brown House Road

<https://www.greenwichct.gov/>

## **11.Loughlin Avenue**

**Features:** Baseball/Softball Diamond, Basketball Court, Benches and tables, Playground (ages 2-12), Restrooms, Soccer field, Tennis court, paddle tennis courts

**Open:** Sunrise-Sunset

**Admission:** FREE

**Location:** 9 Loughlin Avenue

<https://www.greenwichct.gov/>

## **12.Mianus River Park**

**Features:** 109.7 acres in Greenwich, 110.3 acres in Stamford, 2 Trails(Pond Trail and Oak Trail), bedrock outcroppings and ridges, No facilities for camping or picnicking, passive recreation

**Open:** Sunrise-Sunset

**Admission:** FREE

**Location:** Cognewaugh Road

<https://www.greenwichct.gov/>

## **13.Montgomery-Pinetum Park**

**Features:** 109.7 acres in Greenwich, 110.3 acres in Stamford, 2 Trails(Pond Trail and Oak Trail), bedrock outcroppings and ridges, No facilities for camping or picnicking, passive recreation

**Open:** Sunrise-Sunset

**Admission:** FREE

**Location:** 150 Bible Street

<https://www.greenwichct.gov/>

## **14.Pemberwick Park**

**Features:** Basketball court, Playground(ages 2-12), Softball diamond, Tennis court

**Open:** Sunrise-Sunset

**Admission:** FREE

**Location:** 131 Pemberwick Road



<https://www.greenwichct.gov/>

### **15. Roger Sherman Baldwin Park**

**Features:** Concert area, Parking, Restrooms, Skate park

**Open:** Sunrise-Sunset

**Admission:** FREE

**Location:** 100 Arch Street

<https://www.greenwichct.gov/>

### **16. Sachem Nature Preserve**

**Features:** Hiking, Passive recreation, trails

**Open:** Sunrise-Sunset

**Admission:** FREE

**Location:** Sachem Lane

<https://www.greenwichct.gov/>

### **17. Schongalla Nature Preserve**

**Features:** Lake, Natural park

**Open:** Sunrise-Sunset

**Admission:** FREE

**Location:** 100 Arch Street

<https://www.greenwichct.gov/>

### **18. William Street**

**Features:** Basketball court, Benches, Playground(ages 2-12)

**Open:** Sunrise-Sunset

**Admission:** FREE

**Location:** 100 Arch Street

<https://www.greenwichct.gov/>

## **Beaches**

### **19. Byram Park**

**Features:** Ball fields, Beach, Concession area, Grills, Locker room, Pavilion, Picnic tables, Playground, Public marina, Restrooms, Showers, Splash pad, Swimming pool, Tennis court, Walking track, Water fountains

**Open:** 8a.m.-Sunset

**Admission:** VARIES

**Location:** 4 Ritch Avenue W.

<https://www.greenwichct.gov/>

### **20. Great Captain Island**

**Features:** Camping, Ferry, Grills, Hiking, Pavilion, Picnic tables, Restrooms, Showers, Swimming area, Water fountains, 9/11 memorial, Bird sanctuary, Historic lighthouse

**Open:** 7 a.m.-10:30 p.m.



**Admission:** VARIES

**Location:** Great Captain Island

<https://www.greenwichct.gov/>

## **21.Greenwich Point Park**

**Features:** Beach, Clambake area, Concession area, Picnic areas, Public marina, Restrooms, Showers, Walking track, Water fountain, Boat storage, Cowbarn area, Floren Family Environmental Center at Innis Arden Cottage

**Open:** 6a.m.-Sunset

**Admission:** VARIES

**Location:** 11 Tod's Driftway

<https://www.greenwichct.gov/>

## **22.Island Beach**

**Features:** Boating area, Camping, Changing rooms, Concession area, Ferry, Grills, Locker room, Pavilion, Picnic tables, Playground, Restrooms, Running Water, Showers, Sun shelter, Swimming area, Water fountains

**Open:** Sunrise-Sunset

**Admission:** FREE

**Location:** Little Captain's Island

<https://www.greenwichct.gov/>

# **LODGING**

## **23.Delamar Greenwich Harbor**

**Phone:** (203) 661-9800

**Location:** 500 Steamboat Rd

## **24.Hyatt Regency Greenwich**

**Phone:** (203) 637-1234

**Location:** 1800 E Putnam Ave, Old Greenwich

## **25.The J House Greenwich**

**Phone:** (203) 698-6980

**Location:** 1114 E Putnam Ave, Riverside

# **HISTORIC SITES**

## **26.Bush-Holley House**

**Phone:** (203) 869-6899

**Open:** daily: 12pm-4pm, Mon & Tues: closed

**Admission:** Adults: \$10

Seniors and Students: \$8



Always free to members and children under 18  
Free admission to the public: first Wednesday of each month  
Groups of 10 or more must make advance reservations.  
Group reservation rate is \$7 per person.  
**Location:** 39 Strickland Road, Cos Cob, CT 06807  
<http://www.greenwichhistory.org/visit>  
historic site, museum

### **27.Putnam Cottage**

**Phone** 203-869-9697  
**Location:** 243 East Putnam Avenue

## **MUSEUMS**

### **28.Bruce Museum of Arts and Science**

**Phone:** (203) 869-0376  
**Open** daily:10am-5pm, Monday closed  
**Admission:** Adults \$10.00  
Students (5-22 w/ valid ID) \$8.00  
Seniors (65 & up) \$8.00  
Museum members and  
children under 5 Free  
**Location:** 1 Museum Drive, Greenwich, CT 06830  
<https://brucemuseum.org/>  
Museum and gallery

## **GALLERIES**

### **29.The Greenwich Arts Council**

**Phone:** (203) 862-6750  
**Open:** Bendheim Gallery Hours: Tue-Fri 10am-4pm, Sat & Sun 12pm-4pm  
**Admission:** Free  
**Location:** 299 Greenwich Avenue, Greenwich, CT 06830  
[gallery@greenwicharts.org](mailto:gallery@greenwicharts.org)  
gallery

### **30.Greenwich Library and Flynn Gallery**

**Phone:** (203) 622-7900  
**Open:** Mon – Fri: 9am - 9 pm, Sat: 9am-5pm, and Sun: 1pm-5pm  
**Location:** 101 West Putnam Avenue, Greenwich

### **31.Seven Bridges Foundation**

**Phone** 203-861-7527  
**Admission:** By appointment



**Location:** 114 John Street

**32.The Brant Foundation**

**Phone** 203-869-0611

**Admission:** Tuesday-Friday by appointment

**Location:** 941 North Street

## **RESTAURANTS AND SHOPPING**

**33.Greenwich Avenue - Greenwich**

**Open:** everyday

**Location:** Greenwich

**Admission:** free

**34.Sound Beach Avenue – Old Greenwich**

**Open:** everyday

**Location:** Old Greenwich

**Admission:** free

## **LIBRARIES**

**35.Greenwich Public Library**

**Open:** everyday

**Location:** 101 West Putnam Avenue

**Admission:** free

**36.Byram Schubert Library**

**Open:** everyday

**Location:** 21 Mead Avenue

**Admission:** free

**37.Cos Cob Library**

**Open:** everyday

**Location:** 5 Sinawoy Road

**Admission:** free

**38.Perrot Memorial Library**

**Open:** everyday

**Location:** 70 Sound Beach Avenue

**Admission:** free

## **PUBLIC GOLF**



### **39.Griffith E. Harris Golf Course**

**Open:** everyday

**Location:** 1323 King Street

**Admission:** Varies

## **ICE SKATING**

### **40.Dorothy Hamill Skating Rink**

**Open:** everyday

**Location:** 14 Sherman Avenue (Sue Merz Way)

**Admission:** Varies

## **MARINAS**

### **41.Byram Marina**

**Location:** Byram Park

### **42.Cos Cob Marina**

**Location:** Strickland Road

### **43.Grass Island Marina**

**Location:** Grass Island

### **44.Greenwich Point Boat Yard**

**Location:** Greenwich point

## **COMMUNITY CENTERS**

### **45.Bendheim Western Greenwich Civic Center**

**Phone:** (203) 532-1259

**Open:** Monday-Friday

7:30 a.m.-9:30 p.m.

Saturday 8:30 a.m.-8:30 p.m

Sunday 9 a.m.- 6 p.m.

**Admission:** Varies

**Location:** 449 Pemberwick Road

<http://www.greenwichct.gov/>

### **46.Eastern Greenwich Civic Center**

**Phone:** (203) 637-4583

**Open:** Monday-Sunday

9:00 a.m.-9:00 p.m.



**Admission:** Varies

**Location:** 90 Harding Road

<http://www.greenwichct.gov/>

#### **47.YMCA**

**Phone:** (203) 869-1630

**Open:** Monday- Friday: 5:00 AM -10:00 PM

Saturday: 6:30 AM – 7:00 PM

Sunday: 8:00 AM -5:00 PM

**Admission:** Varies

**Location:** 50 West Putnam Avenue

<http://www.greenwichymca.org/>

#### **48.YWCA**

**Phone:** (203) 869-6501

**Open:** Monday - Friday: 6 am - 9:30 pm

Saturday: 8:00 am - 5:00 pm

Sunday: 9:00 am - 3:00 pm

**Admission:** Varies

**Location:** 259 East Putnam Avenue

<http://www.ywcagreenwich.org/>

#### **49.Boys and Girls Club**

**Phone:** (203) 869-3224

**Open:** Varies

**Admission:** Varies

**Location:** 4 Horseneck Lane

<http://bgcg.org/>

#### **50.Greenwich Teen Center**

**Phone:** (203) 629-5744

**Open:** Varies

**Admission:** Varies

**Location:** 100 Arch Street

<http://www.archstreet.org/>